

Step 1 – Fully assemble the vent Kit (for 12” thick wall)



Step 2 – Place vent in hole for marking.



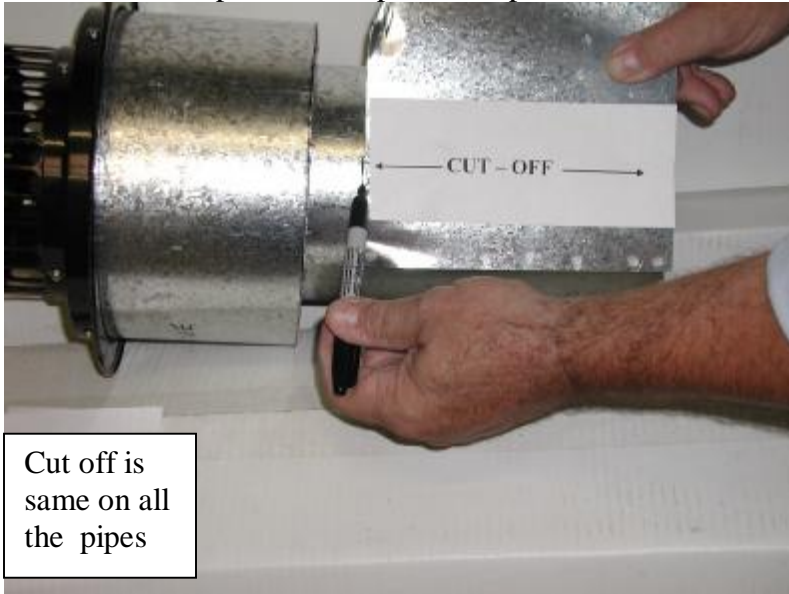
Step 3 – Mark 8” Protection Pipe at Inside Wall



Step 4 – Cut off 8” Protection Pipe excess at wall mark.

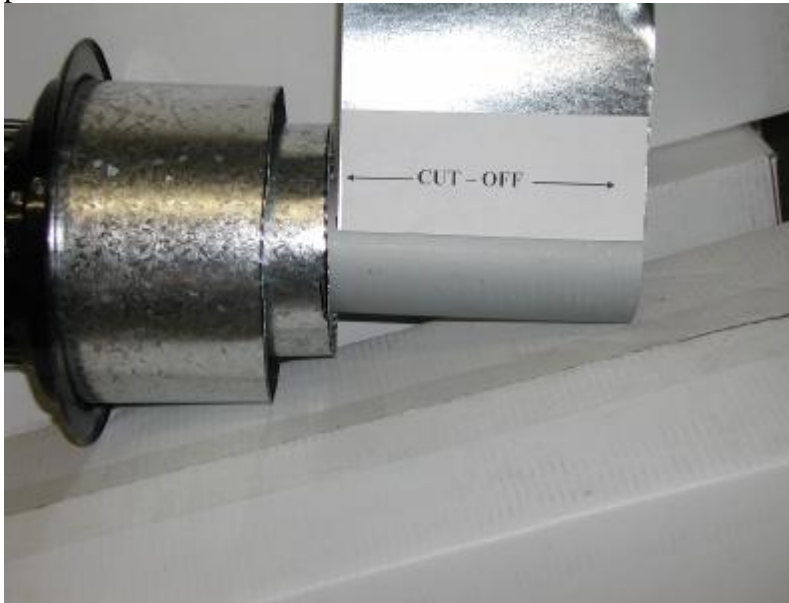


Step 5 – Measure Protection Pipe cutoff and cut off same from the Intake Air Pipe. Intake Pipe should protrude 1 3/8” from wall.

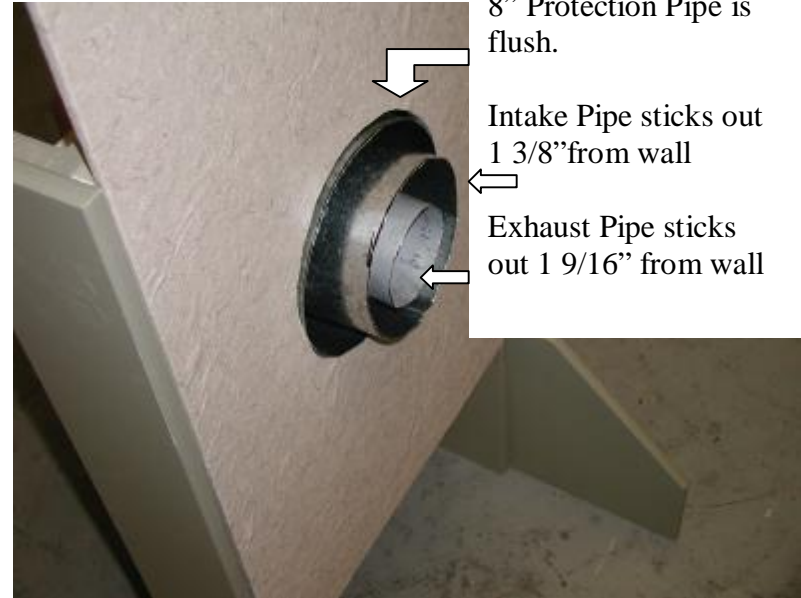


Cut off is same on all the pipes

Step 6 – Cut Exhaust Pipe to length. Exhaust Pipe should protrude 1 9/16” from wall surface.



Step 7 – Install newly cut to length vent kit in opening.



8” Protection Pipe is flush.  
Intake Pipe sticks out 1 3/8” from wall  
Exhaust Pipe sticks out 1 9/16” from wall

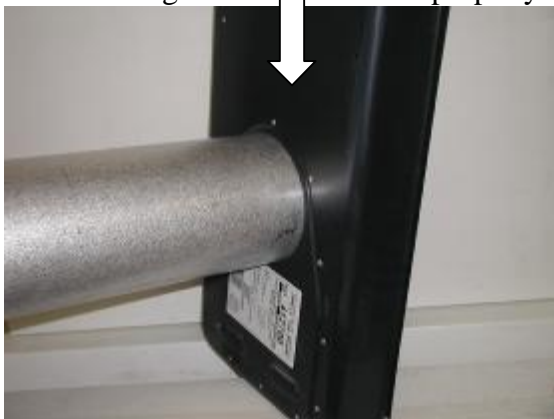
Step 8 – Install wall plate centering vent in hole provided.



Step 9 – Mount unit to wall plate. Check vent attachments at heat exchanger (rear).



Air Intake Pipe **MUST** be flush mounted to Heat exchanger hub to work properly.



When vent kit is properly installed, you will see that the Air Intake Pipe is almost flush to heat exchanger and is sealed on hub. If hub is not sealed, pilot outage and improper main burner operation can occur.

